



Behaviour Policy: Enjoying Our Time at School



Child Friendly Version



Bosley

St. Mary's CE Primary School

Why do we need a behaviour policy?

A behaviour policy is an important set of rules that schools have in place. It helps create a positive and respectful environment where everyone can learn and grow. Just like rules in games or at home, the behaviour policy ensures that everyone treats each other kindly and with respect. This makes our school a safe and happy place for everyone.

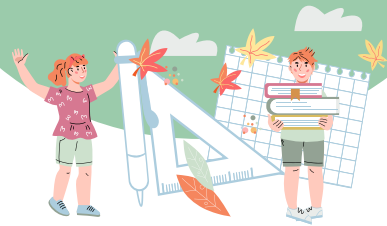
When we all follow the rules, it helps us focus better on our learning and enjoy our play time more. This means we can achieve our goals and feel proud of our accomplishments. It encourages us to build strong friendships and respectful relationships with others. By treating everyone kindly, we create a supportive and friendly atmosphere where everyone can thrive.

What are our school rules?

Our School Rules

Ready

We are prepared for what comes next.



Respectful

We care for everyone and everything in our school.



Safe

We look after ourselves and each other.



What does everyone need to do?



Children

- Follow our school rules
- Try your best
- Tell a grown-up if there's a problem



Teachers

- Follow our school rules
- Teach you how to behave
- Celebrate great behaviour
- Help you when things go wrong



Parents and Carers

- Work with you and your teachers
- Celebrate great behaviour
- Help you when things go wrong

How do we teach behaviour?

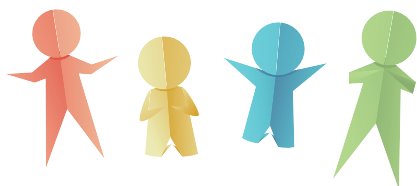
Just like we teach reading, writing, maths, history and all the other subjects in school, we also teach behaviour. These are the things that we do that help us to work, learn and play in school. Some of the different ways we do this are:

- Having a whole school focus where we talk about and practice a skill
- Actively teach it in PSHE
- Talk about it in circle times and class worship
- Recognise and celebrate great behaviours
- Help you to reflect when things go wrong so you can make a different plan next time

How do we celebrate great behaviour?

Lots of different ways!
Some examples are...

PRAISE



Praise



Stickers



Class treats



Postcards home



Certificates

What happens when things go wrong?

Sometimes things go wrong, and that's ok. We are here to help you.

First we will remind you of the behaviours we expect. This usually helps most children get back on track.

Sometimes, when things go further, we will caution a child. That means they will get a warning and some time to think.

If that doesn't work, then we have a consequence like writing a letter or tidying the playground.



If nothing else works, then we will invite parents into to school to help make a plan. We might ask other experts to help us too.

And remember...

YOU
matter

The text 'YOU matter' is centered on a yellow, rounded rectangular background. 'YOU' is written in large, pink, outlined letters, while 'matter' is in a smaller, blue, cursive font. Two blue flowers with yellow centers and green leaves are positioned on either side of the text.